

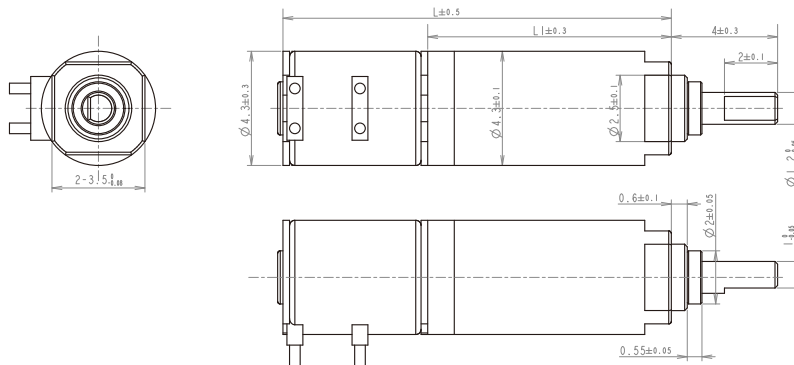
## PD004004

### 齿轮箱规格 Gearbox Specifications

外径	Outer diameter	4.3mm	轴承	Bearing	含油轴承 Porous bearing
材质	Material	塑料 Plastic	轴向窜动	Axial endplay	≤0.3mm
旋转方向	Direction of rotation	cw & ccw	输出轴径向负载	Radial loading on output shaft	≤0.3N
齿轮箱回程差	Gear backlash	≤3°	工作温度	Operating temperature range	-20 ~ +85°C

齿轮级数 Gearbox Stages		1	2	3	4
减速比	Reduction ratio	6	36	216	1296
最大容许扭力 (gf.cm)	Max rated torque of gearbox (gf.cm)	70	70	70	70
瞬间容许力矩 (gf.cm)	Instant torque of gearbox (gf.cm)	200	200	200	200
齿轮箱效率 (%)	Gearbox efficiency (%)	85	73	65	58
长度 (mm)	Gearbox length L1 (mm)	6.18	7.67	9.17	10.72

### 技术插图 | Technical Drawing



### 马达规格参数 Motor Specifications

马达	Motor type	步进电机 Stepper motor	输入速度	Input speed	≤10000rpm
电压	Voltage	3V	负载电流	Current	50mA max

型号 Model	Speed at 2000pps 2000pps频率转速	Max Rated Torque 额定容许力矩	Max Instant Torque 瞬间容许力矩	Reduction Ratio 减速比	Gearbox Length 减速箱长 L1	Overall Length 总长 L
	rpm	gf.cm	gf.cm		mm	mm
PD004004-6	1000.0	140	400	6	6.18	11.78
PD004004-36	166.6	140	400	36	7.67	13.27
PD004004-216	27.7	140	400	216	9.17	14.77
PD004004-1296	4.6	140	400	1296	10.72	16.32

注:可根据客户要求定制 Please contact us for customized products